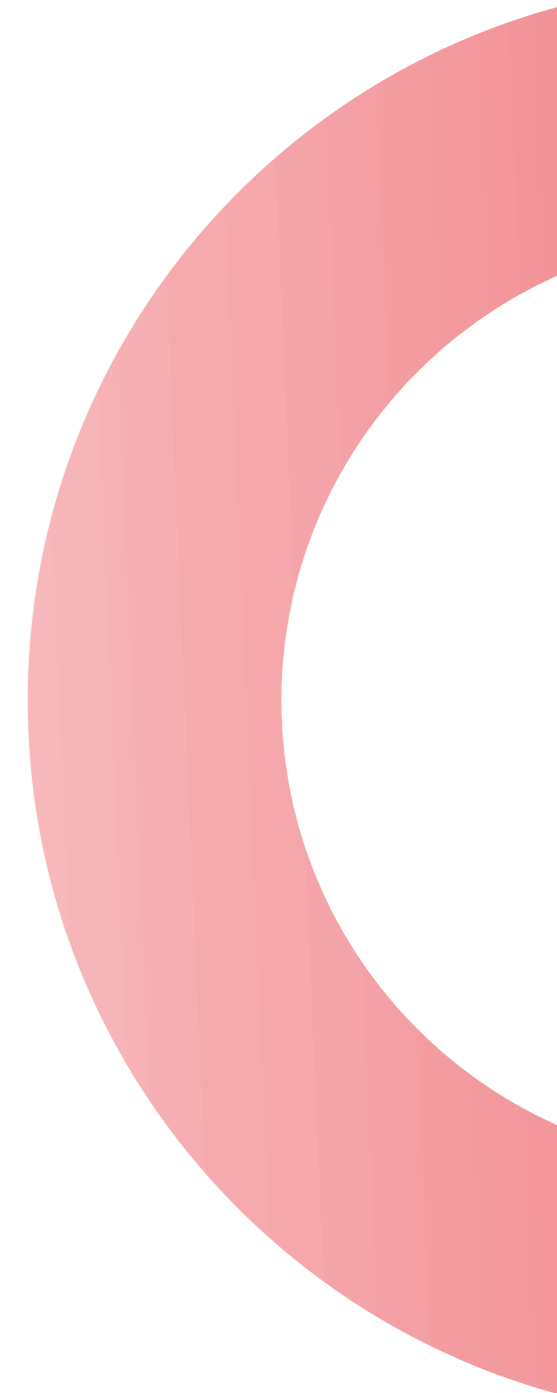




埃  
默  
特  
EHMAT



EHMAT INDUSTRY LIMITED

ADD: Room 816, Lane 5355, Hutai Road, Baoshan District, Shanghai, P.R.C.

TEL: +86 21 3107 2829 Fax : +86 21 31072828

Website: [www.ehmat.com](http://www.ehmat.com)

E-mail: [sales@ehmat.com](mailto:sales@ehmat.com)

EHMAT INDUSTRY LIMITED

# 公司简介

## COMPANY PROFILE

EHMAT is a global leading EPC solution provider headquartered in Shanghai specialized in piping materials and special grade steel products, including high quality steel tubes, pipe fittings, flanges, plates, structural shape and valves. Since establishment in 2014, EHMAT has provided one-stop solutions for projects in the fields of oil & Gas Exploration, Power Station, Chemical, Petrochemical, Ship Building and repair, Construction, Plant Building, Tank Building, Metal Fabrication, Boiler Construction.

Throughout many years efforts in the markets, we has established a long-term and strategic partnership with many Chinese, European, American, Japanese and other steel manufacturers, world-leading engineering institutes, logistic companies and third party inspection companies, etc. All these strategies guarantee us to provide a very comprehensive package with extensive services, competitive prices and deliveries under extremely demanding situations to our worldwide clients.

Having been in operation for many years, EHMAT has formed a professional project management. Based on different projects, our professional team can supply the most cost-effective products for our customers, supporting them comprehensively and actively dealing with issues in project purchase. From the package of overall project materials and advance of module design to trivialities or urgent calls. We are confident to meet your specific engineering, fabrication designs by providing customization service.

埃默特实业（上海）有限公司成立于2014年，拥有多年进口特殊钢材专业经验，与海内外大型钢厂有着长期合作。主要经营各类进口类特殊材料(镍基合金，哈氏合金，双相钢，超级双相钢，进口奥氏体不锈钢，低温碳钢等)，产品类型包含各类管材、型材和板材。

公司以丰富的国内外库存资源，优惠的价格，真诚的服务，良好的信誉，为客户提供一站式配套解决方案，应用领域覆盖石油化工，电力，化学，化工，船业及海工，深海领域等。

## 我们的优势

24小时紧急供货及服务

擅长特殊类材质，非标尺寸及客户定制产品服务

擅长项目管理，提供整包产品配套服务

额外的配套服务：切割，喷涂，包装，端口保护管帽，

## 我们的理念

打造最专业的跨国钢材供应链

Global Piping Materials Solution Provider For

EPC Projects

## 我们的使命

以客户为中心

以不懈的努力满足并超越客户的期望

Rely on innovative thinking and a complete supply chain management model, delivering modular solutions for international Energy EPC projects

## OUR ADVANTAGE

24 hours emergency supply & service

Advantage with special grade, non-standard size, customized service

Good at project management by supply full range of product package

Additional Service: Cutting, Flame and miter, Coating/Wrapping/Machine beveling, Color coding and painting, Third part inspection.

## 核心价值观

团队，合作，诚信，改进

Teamwork, Win-Win

Collaborate, Improving



Global Piping Materials Solution Provider For EPC Projects

## 产品范围 PRODUCT RANGE

管材(无缝&有缝)  
PIPE(SEAMLESS & WELDED)

法兰&锻件&棒子  
FLANGES, FORGINGS AND BARS

对焊/锻造各类管件  
BUTT WELD/FORGED FITTINGS

板材&卷材  
PLATE & COIL

欧标/美标各类型钢  
ALL KINDS OF STRUCTURAL



## 管材供应

### 碳钢 CARBON STEEL

名称NAME	无缝碳钢管 SEAMLESS CARBON STEEL PIPE	有缝碳钢管 WELDED CARBON STEEL PIPE
尺寸SIZES	1/8" through 30"	2" through 120"
壁厚 SCHEDULES	全部 All	全部 All
材质GRADE	A106Gr.B,Gr.C,SA333Gr.3,Gr.6,API5LGr.X42,X52,X60,X65,X70,X80,X100,SA671/672 CC60,CC65, P235GH TC2,P265GH,BS3059 Pt2 - 360,A335/ A179, A192, A106 Gr.B, A210-A1, A334 Gr.1, A334, Gr.6	
原产及工厂 ORIGIN&MILL	SUMITOMO,ARCELORMITTAL,MITTALOSTRAVA,V&M,INTRPIPE,TENARIS, VOESTALPINE,TUBOS,EEW,EISENBAU,STEELFLOWER,SAMKANG M&T ETC 国产：天津，华菱，珠江，宝钢，玉龙等	

### 合金钢 ALLOY STEEL

名称NAME	无缝合金管 SEAMLESS ALLOY STEEL PIPE	有缝合金管 WELDED ALLOY STEEL PIPE
尺寸SIZES	1/4" through 24"	2" through 120"
壁厚 SCHEDULES	全部 All	全部 All
材质GRADE	A213 T11, A213 T22, A213 T5,A213 T91,T92,A335 P5,P9,P11,P22,P12,P91,P92,A691 1CR,1 1/4CR,2 1/4CR,5CR,9CR,91	
原产及工厂 ORIGIN&MILL	SUMITOMO,JFE,TENARIS,VOESTALPINE,PRODUCTOS,TUBOS,V&M, KASCO,EEW,EISENBAU,STEELFLOWER,SAMKANG M&T ETC 国产：天津，华菱，珠江，新冶钢等	



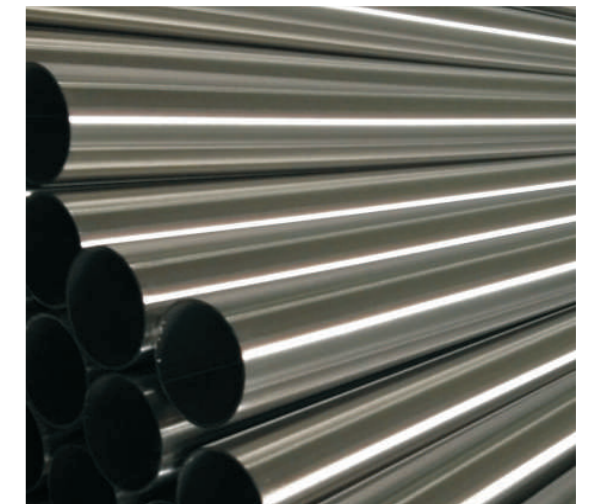
## 管材供应

### 不锈钢，双相钢，超级双相钢 STAINLESS, DUPLEX, SUPERDUPLEX STEEL

名称NAME	无缝不锈钢，双相钢管 SEAMLESS STAINLESS, DUPLEX STEEL PIPE	有缝不锈钢，双相钢管 WELDED STAINLESS DUPLEX STEEL PIPE
尺寸SIZES	1/8" through 24"	2" through 96"
壁厚 SCHEDULES	全部 All	全部 All
材质GRADE	TP304/304L, TP316/316L, TP309S, TP310S, TP316Ti, TP317/317L TP321, TP321H, TP347, TP347H, TP904LUNS S31803, UNS S32750, UNS S32760, UNS S32205	
原产及工厂 ORIGIN&MILL	TUBACEX, SANDVIK, SEAH, SCHOELLER BLECKMANN, BUTTING, INOX, KOBE SPECIAL, SANYO SPECIAL, NSSMC, RIVIT, GIEMINOX, BRISTOL, SALZGITTER MANNESMANN STAINLESS TUBES, 国产：太钢，武进，宝钢等	

### 镍基合金&6MOLY 合金 Nickel alloy&6 Moly steel

名称NAME	无缝镍基合金&6MOLY 合金管 SEAMLESS NICKEL&6MOLY ALLOY STEEL PIPE	有缝镍基合金&6MOLY 合金管 WELDED NICKEL&6MOLY ALLOY STEEL PIPE
尺寸SIZES	1/2" through 8"	1/2" through 96"
壁厚 SCHEDULES	全部 All	全部 All
材质GRADE	200, 201, 400, 600, 601, 625, 800, 800H, 800HT, 825, C-276, Alloy 20, C22, B2, B3, AL6XN, 254SMO	
原产及工厂 ORIGIN&MILL	TUBACEX, SANDVIK, SPECIAL METAL, SANYO SPECIAL, NSSMC, SALZGITTER MANNESMANN STAINLESS TUBES, RIVIT, GIEMINOX, BRISTOL, WYMAN GORDON, HAYNES INTERNATIONAL, BENTELER, PRODUCTOS ETC	





## 法兰&锻件&圆棒供应

名称 NAME	材质 GRADE	尺寸 SIZES	供应范围 SUPPLY SCOPE
碳钢 CARBON STEEL	Sa105,A/SA350LF3, A/SA350 LF2,A694 F42- 65,A266CL1-4,	Sizes according to ASME/ASTM B16.5 – B16.36 – B16.48,CLASS150,CLASS300,CLAS S600 ,CLASS900,CLASS1500,CLASS250 0,CLA SS3000,CLASS6000,1/4" - MAX; Sizes according to DIN – EN1092- 1 – EN1759-1 – NFE – BS10/BS4504 – ISO7005- 1,PN2.5/PN06/PN10 up to DN800,PN16/PN25/PN40 up to DN600,PN63/PN100 up to DN500,PN160/PN250 up to DN300,PN320/PN400 up to DN200 API 6A Flanges, 2000 PSI up to 20000 PSI JIS B2220 ,5K up to 63K	FLANGE(WELDING NECK,SLIP- ON,LAP JOINT,BLIND,THREADE D,SOCKET WELDING,LONG WELDING NECK,RING JOINT,ORIFICE)SPECTA CLE FLANGE,NOZZLE FLANGE,FORGED DISC,FORGED RING,TUBE SHEET,FORGED SHAFT,ROUND BAR ETC 法兰 ( WELDING NECK,SLIP-ON,LAP JOINT,BLIND,THREADE D,SOCKET WELDING,LONG WELDING NECK,RING JOINT,ORIFICE) , 8 字盲板法兰,接管法 兰, 锻造圆饼, 锻造圆 环, 管板, 锻轴, 圆棒等
高温合金钢 HIGH- TEMP ALLOY STEEL	A182 F1,F2,F5,F9,F11, F12,F22,F9 1		
不锈钢 STAINLESS	A182F304,F304L,F316, F316L,F310S,F321,F321 H,F347,F904L		
( 超级 ) 双相钢 (SUPER)DUPLEX	A182 F51,F53,F55,F60		
镍基合金 NICKLE ALLOY	Sb564 Monel 400,Inconel 600,Incoloy 800,Incoloy 800H,Incoloy 800HT,C276,C22,C4		



## 对焊管件、锻造管件供应

名称 NAME	尺寸 SIZES	材质 GRADE	供应范围 SUPPLY SCOPE
碳钢 CARBON STEEL	1/8" - 36"	A/SA234 WPB/WPC,A/SA105,A/SA350 LF2,A/SA420 WPL3, A/SA350 LF3,A/SA420 WPL6, A/SA350 LF2	90°LR/SR Elbows,90° Reducing Elbows,45° Elbows,Tees,Reducing Tees,Concentric/Eccen tricReducers,Caps,Stu b Ends,Crosses,180° LR/SR Return Bends, Laterals,Weldolets,(Sw age)Nipples,Couplings, Sa ddles 90 度长半径、短半径弯 头, 90 度变径弯头, 45 度 弯头, 三通, 变径三 通, 同心、偏心大小 头, 管帽, 翻边短节, 四通, 180 度长半径, 短半径弯管, 短节, 管 箍, 补强板等
高温合金钢 HIGH- TEMP ALLOY STEEL	1/8" - 36"	A234 WP5,WP9,WP11,WP12,WP22, WP91,A182 F5,F9,F11,F12,F22,F91	
不锈钢 STAINLESS	1/8" - 36"	A403 WP304/304L, A403 WP316/316L, A403 WP 317/317L,A403 WP 321/321H.A403 WP347/347H,A182 F304/L,F316/L,F321/H,F347	
( 超级 ) 双相钢 (SUPER)DUPLEX	1/8" - 36"	A/SA815,WPS31803,A/SA815,WPS3275 0,A/SA815,WPS32760,A/SA815,WPS322 05,A182 F51,F53,F55,F60	
镍基合金 NICKLE ALLOY	1/2"-12"	B/SB366, SB564 Monel 400,Inconel 600,Incoloy 800,Incoloy 800H,Incoloy 800HT,C276,C22	





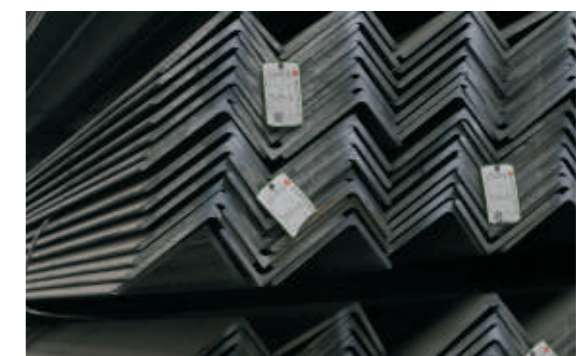
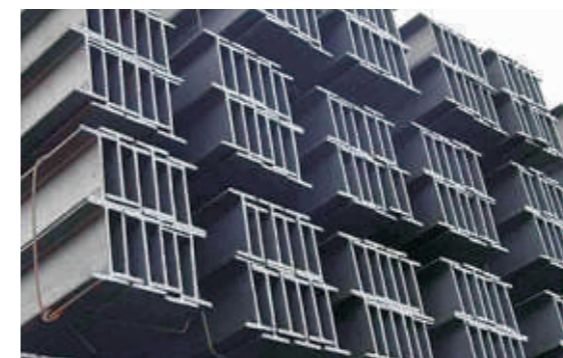
## 板材&卷材供应

名称NAME	卷材 COIL	板材 PLATE
尺寸SIZES	Carbon 碳钢(1.5mm-25mm),stainless 不锈钢(0.05mm-7mm),nickle alloy 镍基合金(0.2mm-6.4mm)	Carbon 碳钢thk>4mm,Stainless 不锈钢thk>4mm,nickle alloy 镍基合金(4.76mm- 102mm)
轧制方式 ROLLED METHOD	热轧&冷轧 HOT&COLD	热轧&冷轧 HOT&COLD
材质GRADE	CARBON STEEL(A36,A283,A570,A572,A633,A588,A537,A302,A553,API5L B,X42-X120,A203 ABS, GL, LR, NV, RINA, CR, BVA/B/C/D/AH32,EH32,AH40,EH40,S355G9/G10), HIGH TEMPERATUREALLOY( A285 GrA/B/C, A515 Gr55/60/65/70, A537 CLASS1/2, A387 Gr5/9/11/12/22/91), A302 GrC, A553-1,STAINLESSSTEEL&DUPLEX( 301,304/L,310S,316/L,321/H,347,317/L,S31803,2507,S32760,2205)NICKLE ALLOY(200, 201, 400, 600, 601, 625, 800, 800H, 800HT, 825, C-276, Alloy 20, C22,B2,B3),6Moly(AL6XN,254SMO)	
原产及工厂 ORIGIN&MILL	POSCO,HYUNDAI,OUTOKUMPU,NSSMC,SPECIAL METAL,ALLEGHENY,THYSSENKRUPP VDM,DILLENGER,INDUSTEEL,ARCELOR MITTAL,TATA,DONGKUK,JFE,KOBE STEEL,ACERINOX,APERAM, ETC 国产 : Baosteel, Bengang Group,Shougang Group, Ansteel, Masteel and son on	



## 型钢供应

名称NAME	范围SCOPE	标准STANDARD	材质GRADE
型钢H BEAM H	CARBON STEEL 碳钢,STAINLESS 不锈钢,(SUPER)DUPLEX (超级) 双相钢	ASTM/ASME/EN/ JIS/CSAG/BS/D IN/GOS	ASTM(A36/A572 GR.42,50,55,60,65/A992/A588/709),EN(S235,S275 JR,J0,J2,S355JR,J0,J2,K2,S 355G1,G4,G11,G12,S275 M,S355M,S355ML, S460 M,16MO3)JIS(SM400A,B, C,SM490YA,YB,SS400,SS4 90),CSAG(260W,300,350 W,400W)BS(40B,40C,40D, 43B,C,D,50B,C,D,55C),DIN (ST37,ST44,ST52,ST50,ST 60,ST70)GOST(St3ps cat5,st3sp cat5,09G2S cat12)
槽钢CHANNEL			
角钢ANGLE BAR			
方管SQUARE PIPE			
矩形钢RECTANGULAR PIPE			
方棒SQUARE BAR			
扁钢FLAT BAR			
型钢T-RPROFILE T	原产及工厂 ORIGIN&MILL		
SWT,TATA,ARCELOR MITTAL,LME,HYUNDAI,Tung Ho steel,HUTA POKOJ, CMC Steel,GERDAU,USA,Nippon steel and sumitomo metal corporation,STAR STEEL,FENG HSIN IRON AND STEEL,Dongkuk ETC 国产 : 唐钢, 包钢, 唐山, 马钢, 济钢, 莱钢, 青山, 日照, 友发, 华岐, 山东, 天柱, 正大等			





# 产品检验

## PRODUCTIONS INSPECTION

“质量是企业生存之本” 为我们的座右铭，我们有自己内部质量控制体系来确保每件产品的质量。对国内产品的每批货物配有检验员进行现场检验，现场检验通常包含质保书审核，表面质量检验（包括尺寸，数量喷标以及标签包装等）。

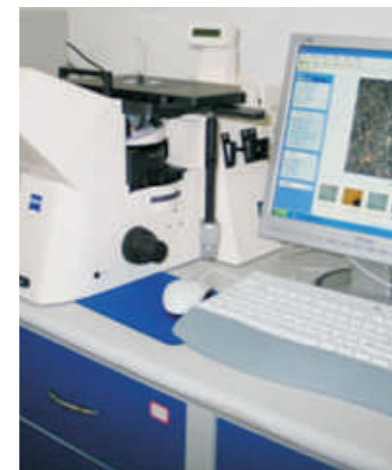
特定的检验，如光谱，超声波，拉伸试验，屈服试验，硬度检验，冲击功检测等，提供所有检验的照片和检验报告。

确保每批货物都按照炉号或批号有详细追踪标记。

“Quality is the life of a company” is our motto. We have our own complete QC system to assure the quality for each item we delivered.

Specific required testing such as PMI, UT, Tensile test, Yield strength, Hardness, Impact test etc. Photos and inspection report shall be supplied along with each shipment.

Every QC step will be detailed recorded and can be traced by heat No. And Lot No.



国旋提供权威第三方检验如：ABS, Bureau Vitas, Lloyd's, DNV, G.L, CCS, SGS等。

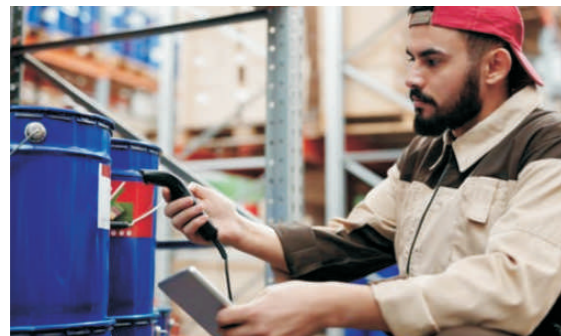
GUOXUAN work with the third party inspection such as ABS, Bureau Vitas, Lloyd' s, DNV, G.L, CCS, SGS ETC.





# 物流 LOGISTICS

\*符合国际规范的安全包装  
\*Delivery in safety packing.



\*及时高效的运输服务  
\*In time delivery



\*世界范围内专业的物流建议  
\*Professional consultation worldwide shipping.



\*运前检验  
\*Inspection before shipment



\*7天/24小时保证货物的可追踪性  
\*24/7support for traceable your goods



# 工厂和合作伙伴 MILLS AND STRATIGY PARTNER

